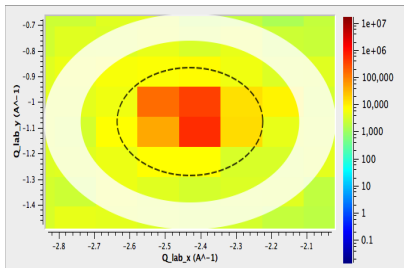


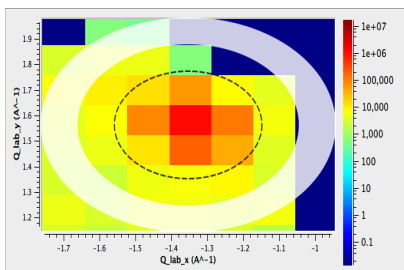
Peak Integration Report for QLab

MD Workspace: QLab

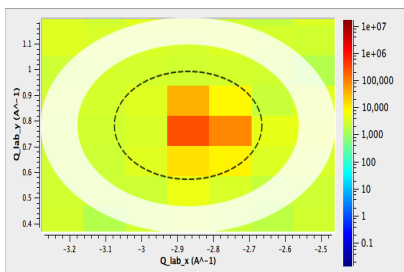
Peaks Workspace: peaks_qLab_Integrated



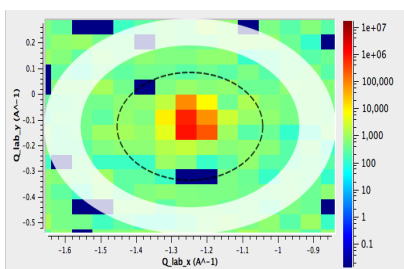
PeakNumber: 0
Run Number: 23767
Intensity: 3254.83430875
TOF: 3182.07234759
Detector Id: 2036
Q Lab: [-2.42956,-1.07739,7.58654]
Q Sample: [-2.42956,-1.07739,7.58654]
HKL: [-4.02448,-0.0875409,6.01011]



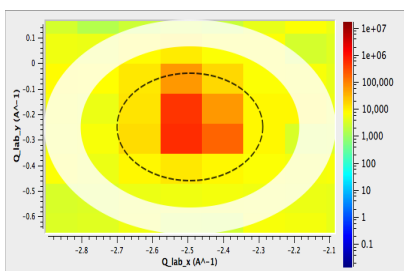
PeakNumber: 1
Run Number: 23767
Intensity: 3309.54969798
TOF: 2879.2201428
Detector Id: 324
Q Lab: [-1.35298,1.56414,8.96038]
Q Sample: [-1.35298,1.56414,8.96038]
HKL: [-2.01699,-0.071259,8.02873]



PeakNumber: 2
Run Number: 23767
Intensity: 990.875421493
TOF: 2963.07600727
Detector Id: 2259
Q Lab: [-2.87082,0.783717,8.04185]
Q Sample: [-2.87082,0.783717,8.04185]
HKL: [-3.02479,0.950037,7.03304]



PeakNumber: 3
Run Number: 23767
Intensity: 544.825363126
TOF: 5247.25885962
Detector Id: 1380
Q Lab: [-1.24809,-0.124631,4.83724]
Q Sample: [-1.24809,-0.124631,4.83724]
HKL: [-2.02344,-0.0497412,4.01649]



PeakNumber: 4
Run Number: 23767
Intensity: 2790.35733438
TOF: 2625.41032912
Detector Id: 1380
Q Lab: [-2.49486,-0.247897,9.66777]
Q Sample: [-2.49486,-0.247897,9.66777]
HKL: [-4.04341,-0.0985972,8.02783]